

CX100100TI

X-Ray Inspection System



Dual-energy X-ray inspection system • Widely used in a variety of applications



HIGH IMAGE QUALITY

Wire resolution of 38 AWG and steel penetration up to 35mm

EXPLOSIVES & NARCOTICS DETECTION

Automatic according to atomic number signatures

THREAT IMAGE PROJECTION (TIP)

Practical solution for operator performance monitoring and training, reducing the probability of threat misses

COMPLIANT

Complies with all international safety and health standards. X-ray leakage around the equipment is close to natural background

ERGONOMIC

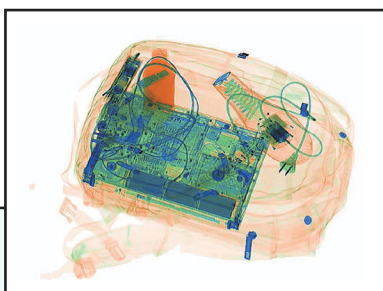
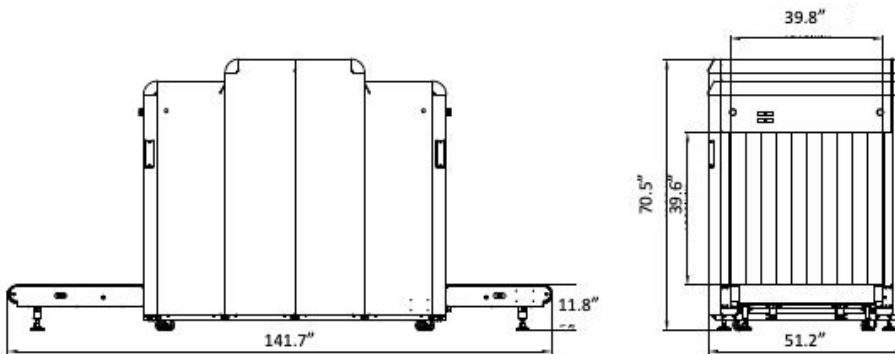
Keyboard and user interface design ensure efficiency

MODULAR DESIGN

Full built-in diagnostic facilities for streamlined service and maintenance

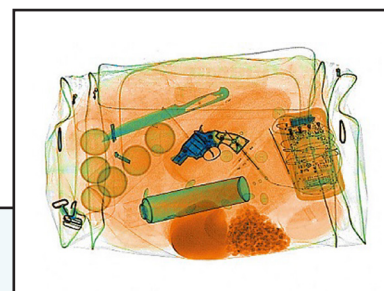
COMPREHENSIVE IMAGE FUNCTIONALITY

Supports stepwise, continuous and magnifier functions to enlarge images that can be saved and/or transferred to external storage in general image formats including BMP, JPG, GIF and TIFF



Advanced material classification:
orange for organic, blue for metal
and green for mixed material

**Automatic detection of
explosives & drugs**



The STVS CX100100TI is an advanced dual-energy X-ray inspection system designed for luggage, hand baggage, and breakbulk cargo. With tunnel dimensions of 39.8 in width and 39.6 in height, CX100100TI is engineered with an ergonomic design for efficient screening at numerous locations including airports, railway stations, customs, ports, and stadiums.

Combined with unsurpassed reliability and safety, the enhanced image quality and advanced material classification of CX100100TI enable multiple optional features including automatic explosives and narcotics detection.

TECHNICAL SPECIFICATION

Tunnel Dimensions	39.8 in (W) x 39.6 in (H)
Conveyor Speed	0.20m/s
Conveyor Height	11.8 in
Max. Load	441 Lbs

IMAGE PERFORMANCE

Wire Resolution	38 AWG
Steel Penetration	35mm
Display Resolution	1280 x 1024

IMAGE PROCESSING SYSTEM

Image Enhancement	Color/BW, negative, high/low penetration, organic /inorganic stripping, general enhancement, multi-absorptivity, and suspect material enhancement
Material Classification	According to atomic number signatures
ROI & Zoom	Step/stepless zoom, up to 32 times enlargement
Image Recall	Preceding images recallable
Image Storage Capability	Up to 100,000

MISCELLANEOUS FUNCTIONS

Standard Functions	Time/date display, counters, user management, system-on/X-ray-on timers, power on self test, built-in diagnostic facilities, dual-direction scanning, system log, system standby and training, etc.
Other Functions	Explosives/narcotics detections, high-density area alert, threat image projection (TIP)

HEALTH AND SAFETY

X-ray Leakage	Less than 1 μ Gy / h (5cm from the housing) complying with all published international standards
Film Safety	Guaranteed for high speed film up to ASA/ISO1600 (33DIN)

INSTALLATION DATA

Dimensions	141.7 in (L) x 51.2 in (W) x 70.5 in (H)
Weight	2,336.9 lbs.
Storage Temperature / Humidity	-40°F ~ +140°F / 5% ~ 95% (non-condensing)
Operating Temperature / Humidity	32°F~ +104°F / 5% ~ 95% (non-condensing)
Power Supply	120VAC (-10% ~ +10%) 60Hz 3Hz
Power Consumption	1.0kVA