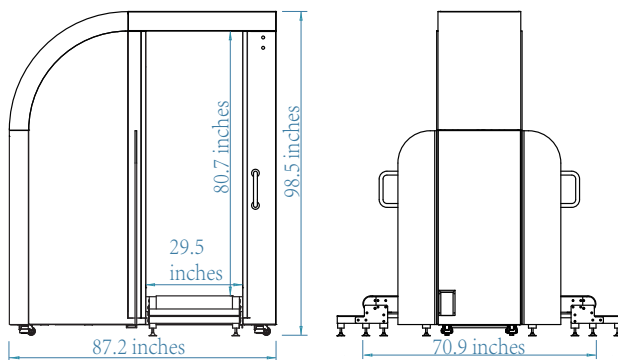


HT2000GA

Human Body Inspection System



Inspection on and inside the body • High quality real time images • Widely used in a variety of applications



INSPECTION ITEMS



NON-CONTACT HEAD-TO-TOE INSPECTION

No special motion required; identifies threats hidden on and inside the body with only one scan.

SUPERIOR INSPECTION CAPABILITY

Easily detects contraband concealed under clothing, swallowed or concealed in body cavities including metallic and nonmetallic weapons, explosives, drugs, smuggled goods, mobile phones, jewelry, gems and precious metals.

REDUCES CONFRONTATIONAL SEARCHES WHILE ENABLING STAFF OPTIMIZATION

Reduces time consuming and potentially dangerous pat-downs and number of staff required to screen each person; freeing up personnel for deployment as needed

PRACTICAL SOFTWARE

Provides image processing, database management, user management and training functions; LAN and WAN compatible enabling remote inspection, portable monitor and centralized management

RADIATION SAFETY

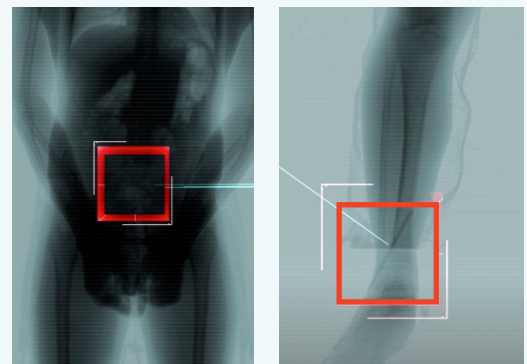
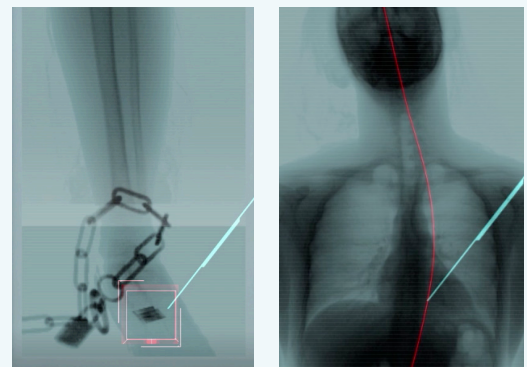
Dose level complies with the IAEA and ANSI N43.17 standards; Including in correctional facilities, law enforcement, border crossings and special events.

CONVENIENT MAINTENANCE

Modular design provides easy installation and maintenance

WIDELY USED IN A VARIETY OF APPLICATIONS

Including in correctional facilities, law enforcement, border crossings, special events, etc.



DOSE COMPARISON



HT2000GA

TECHNICAL SPECIFICATION

Inspection mode	Non-contact
Scan time	≤ 7s
Spatial resolution	Φ 1.0 mm line pairs
Wire detectability	38 AWG
Radiation dose for single inspection	0.25 ~ 2.0 μSv (adjustable) ANSI Limited Use Standard
Detection capabilities	Metal/non-metal weapons, explosives, drugs, liquids, etc.

IMAGING PROCESSING SYSTEM

Standard operator number	1
Image acquisition mode	Real time
Image processing functions	Zoom & move, contrast & brightness adjustment, mark, enhancement, inverse, etc.
Image retrieval	Retrieve scanned images, track inmate cumulative dose.

INSTALLATION DATA

System dimensions (fence excluded)	98.5 in (H) x 87.2 in (D) x 70.9 in (W)
Tunnel dimensions	80.7 in (H) x 29.5 in (W)
Weight	1,676 lbs
Power supply	100 ~ 120VAC / 200 ~ 240VAC, 50/60Hz
Power consumption	1.3 KVA
Operating temperature/Humidity	32°F + 104°F / 5% ~ 95% (non-condensing)
Storage temperature/Humidity	-4°F + 140°F / 5% ~ 95% (non-condensing)

ADVANCED FUNCTION

Optional features	Touchscreen, video surveillance, barcode scanner, remote control & management., self failing & platform, dosimeter, fingerprint reader, etc.
-------------------	--