

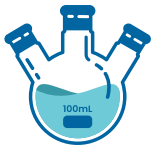


TECHNICAL FEATURES

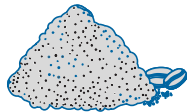
- ✓ Simple, accurate, and intuitive solution that is lightweight, portable, and easy to set up
- ✓ Safe for the operator with no harmful radiation
- ✓ Most affordable complete mail screening solution
- ✓ Scalable, quickly and easily deployed across multiple sites
- ✓ Eliminates the need for radiation licensing, management, and safety programs
- ✓ Offers 24x365 access to EOD experts for alarm resolution and support and training



BIOLOGICAL



CHEMICAL



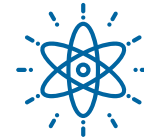
POWDER



EXPLOSIVES



RADIOLOGICAL



NUCLEAR



CONTRABAND

Quick, highly-accurate detection of all 9 of the DHS designated CBRNE substances.

The MailSecur solution fills a critical gap not addressed by traditional X-ray screening technology – the ability to detect the most elusive mail threats. Traditional methods of mail screening, like X-ray or chemical detection, are not sensitive enough to effectively detect threats like liquids, powders, and drug-laced paper. MailSecur uses safe T-rays to “see inside” letters and packages, with live, 4D imaging. It detects all 9 of the DHS designated substances compared to only 3 out of 9 for X-ray. Remote screening capabilities are built-in with around-the-clock access to former military explosive ordnance disposal (EOD) experts.



4 OF THE 5 LARGEST
US COMPANIES ARE PROTECTED BY

MAILSECUR[®]



T-RAY TECHNOLOGY	Provided at 10x the Resolution Used in Airport Scanners Screening Dual Zone – Standard and 3x Optical Zoom View Safe, Requires No Certification, Dedicated Safety Protocols, or Special Shielding
DIMENSIONS	19.5 in x 32 in x 31.5 in (49.5 x 81.3 x 80 cm) 70 Pounds (31.75 kg)
CAMERA(S)	T-Ray (mmWave) and Optical
FEILD OF VIEW	9 . in x 7 . in (23.5 x 18.4 cm)
IMAGE ENHANCEMENT	Multiple Color Mapping Brightness and Contrast Adjustment 3X Optical Magnification
AUTOMATED THREAT DETECTION	AI Supported Detection Software Update
METAL DETECTION	Sensitivity Control Visual and Audible Alarm
RADIATION DETECTION	Gamma Radiation Beta Radiation
POWER	Standard 110/220 V AC
INTERNET CONNECTION	Ethernet, WiFi, LTE
PERIPHERALS	USB, HDMI
SETUP TIME	Typically <30 minutes

