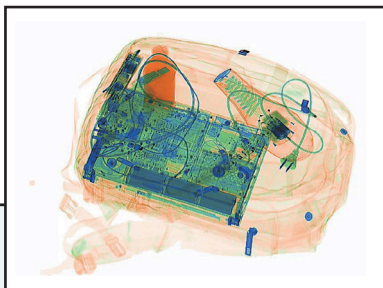
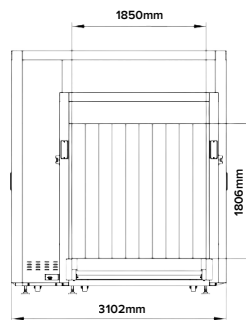
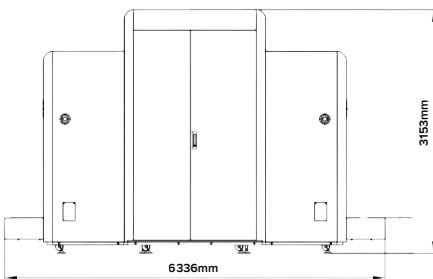
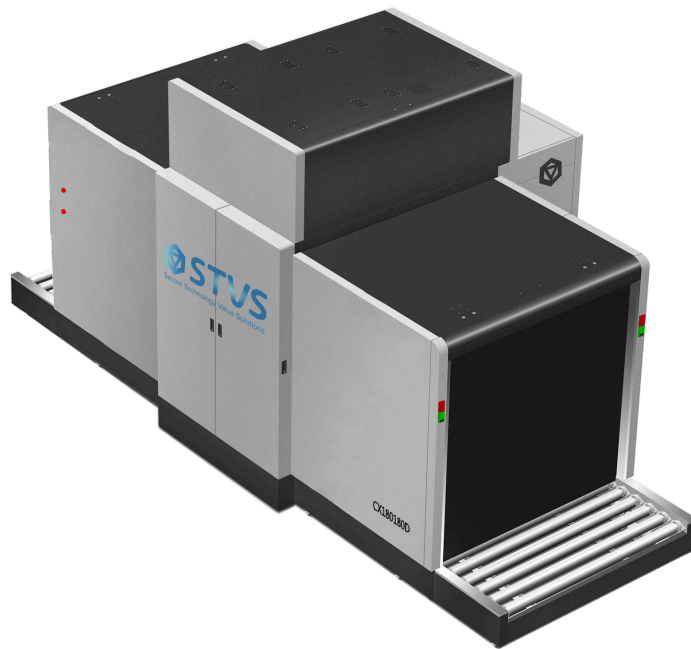


# CX180180D

## X-Ray Inspection System

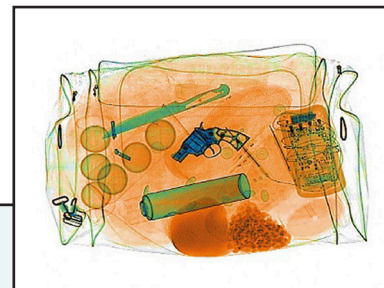


Dual-energy X-ray inspection system • Widely used in a variety of applications



**Advanced material classification:**  
orange for organic, blue for metal  
and green for mixed material

**Automatic detection of  
explosives & drugs**



### HIGH IMAGE QUALITY

Wire resolution of 38 AWG and steel penetration up to 50 mm

### EXPLOSIVES & NARCOTICS DETECTION

Automatic according to atomic number signatures

### THREAT IMAGE PROJECTION (TIP)

Practical solution for operator performance monitoring and training, reducing the probability of threat misses

### COMPLIANT

Complies with all international safety and health standards. X-ray leakage around the equipment is close to natural background

### ERGONOMIC

Keyboard and user interface design ensure efficiency

### MODULAR DESIGN

Full built-in diagnostic facilities for streamlined service and maintenance

### COMPREHENSIVE IMAGE FUNCTIONALITY

Supports stepwise, continuous and magnifier functions to enlarge images that can be saved and/or transferred to external storage in general image formats including BMP, JPG, GIF and TIFF

STVS offers a series of X-ray inspection systems with large tunnel opening for pallet cargo screening. Based on the best proven CX products platform, the pallet cargo X-ray inspection system has fully inherited the world-leading image performance, ergonomic user interface, advanced imaging enhancing algorithms, powerful functions and network applications, as well as high reliability and safety.

With unparalleled high image quality and advanced dual-energy material classification technology, the pallet cargo X-ray inspection system can completely meet all security and customs screening demands of airports, rail transportation stations, ports, critical infrastructures, big events, etc.

## TECHNICAL SPECIFICATION

Tunnel Dimensions	72.8 in (W) x 71.1 in (H)
Conveyor Speed	0.20m/s
Conveyor Height	12.99 in
Max. Load	4,409 Lbs

## IMAGE PERFORMANCE

Wire Resolution	38 AWG
Steel Penetration	50mm
Display Resolution	1280 x 1024

## IMAGE PROCESSING SYSTEM

Image Enhancement	Color/BW, negative, high/low penetration, organic /inorganic stripping, general enhancement, multi-absorptivity, and suspect material enhancement
Material Classification	According to atomic number signatures
ROI & Zoom	Step/stepless zoom, up to 64 times enlargement
Image Recall	Preceding images recallable
Image Storage Capability	Up to 100,000

## MISCELLANEOUS FUNCTIONS

Standard Functions	Time/date display, counters, user management, system-on/X-ray-on timers, power on self test, built-in diagnostic facilities, dual-direction scanning, system log, system standby and training, etc.
Other Functions	Explosives/narcotics detections, high-density area alert, threat image projection (TIP)

## HEALTH AND SAFETY

X-ray	Less than 1 $\mu$ Gy / h (5cm from the housing) complying with all published international standards
Leakage Film	Guaranteed for high speed film up to ASA/ISO1600 (33DIN)

## INSTALLATION DATA

Dimensions	249.4 in (L) x 122.1 in (W) x 124.1 in (H)
Weight	11,717 lbs.
Storage Temperature / Humidity	-40°C ~ +60°C / 5% ~ 95% (non-condensing)
Operating Temperature / Humidity	0°C ~ +40°C / 5% ~ 95% (non-condensing)
Power Supply	100VAC - 240VAC (-10% ~ +10%) 50Hz-60Hz 3Hz
Power Consumption	2.5kVA